

Co-construire la ville de demain avec les citoyens

Die Stadt von morgen gemeinsam gestalten

Co-costruire la città del domani con i cittadini



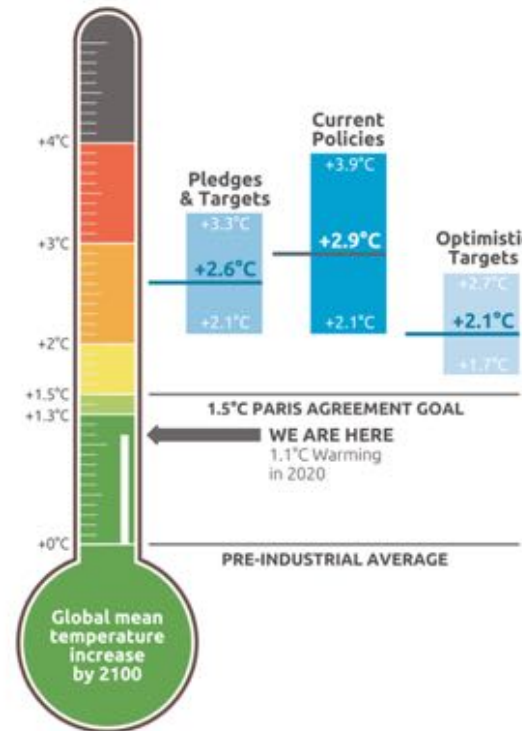
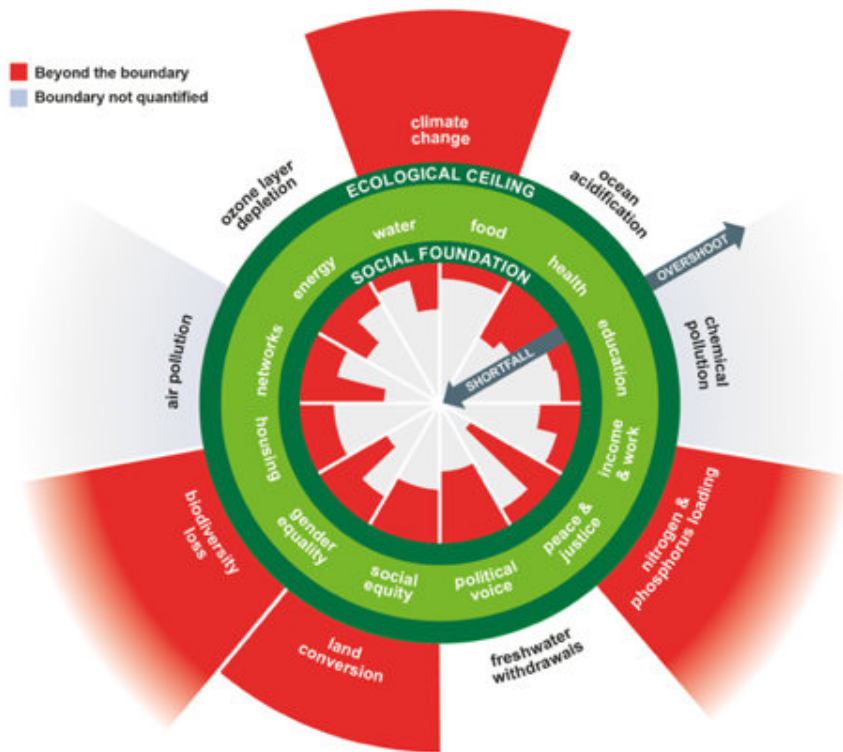
Norry Schneider, co-Koordinator CELL – the transition hub

Netto Null Zentralkonferenz Fachverband Schweizer Raumplaner FSU 8.1.2021

A close-up photograph of a person's hand placing a black game piece on a board game. The board consists of hexagonal tiles in various colors (green, brown, yellow, blue) with numbers in the center. Other game pieces in red and blue are visible on the board. The background is blurred, showing a bookshelf and another person's hands.

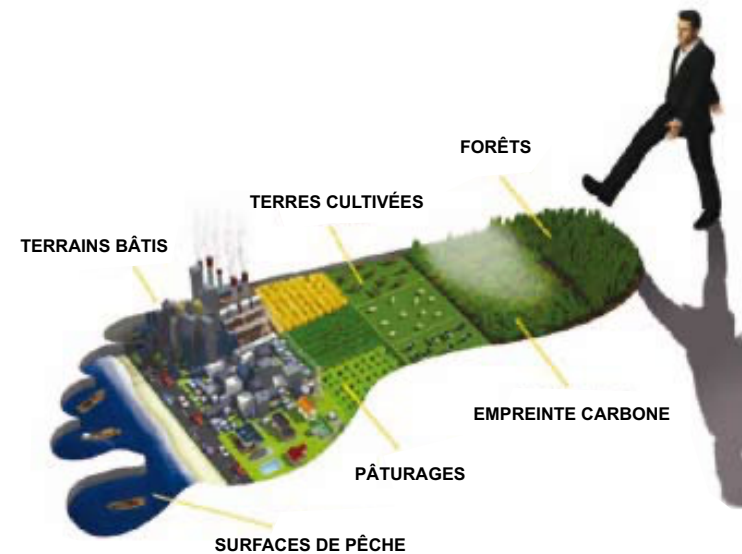
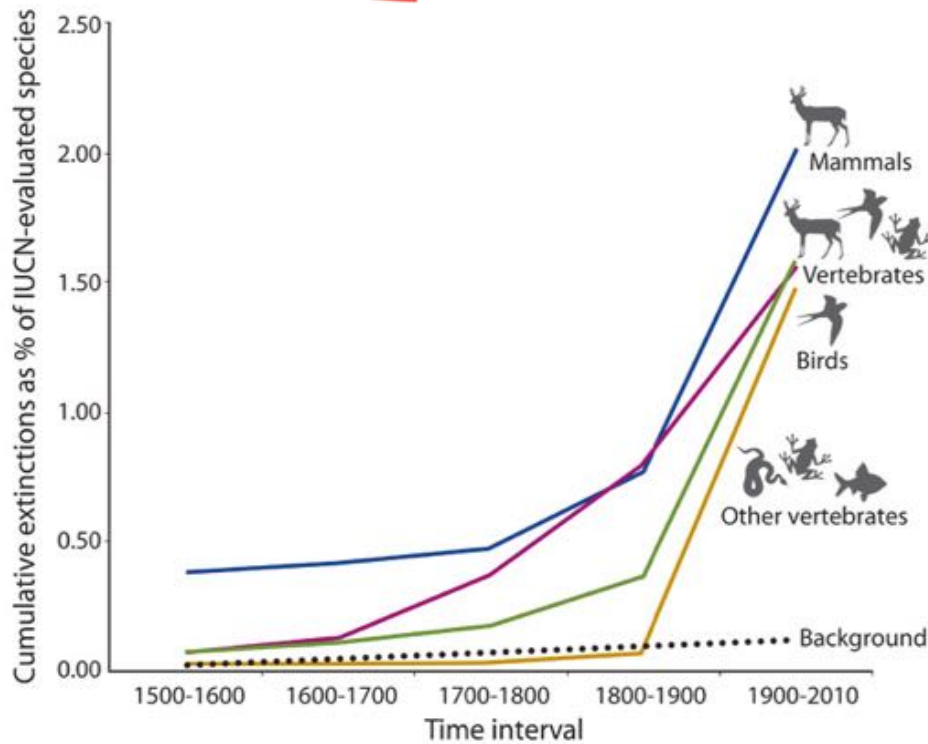
I. Was steht auf dem Spiel?





CAT warming projections
Global temperature increase by 2100

December 2020 Update



© The Ministry for the Environment, New Zealand

PEAK EVERYTHING

WAKING UP to the CENTURY OF DECLINES



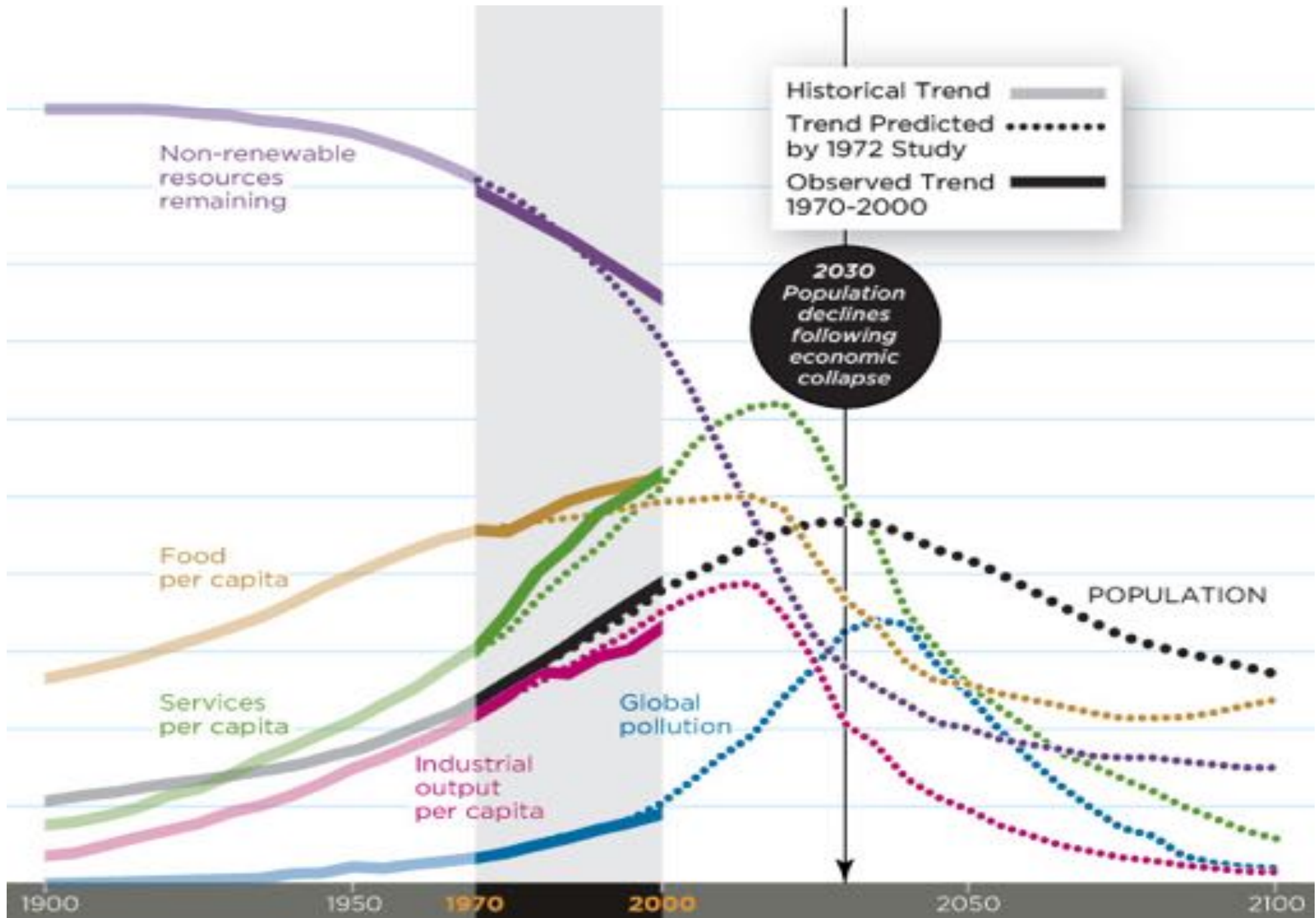
The Global Risks 2015 Report

For Which Global Risks Is Your Region Least Prepared?



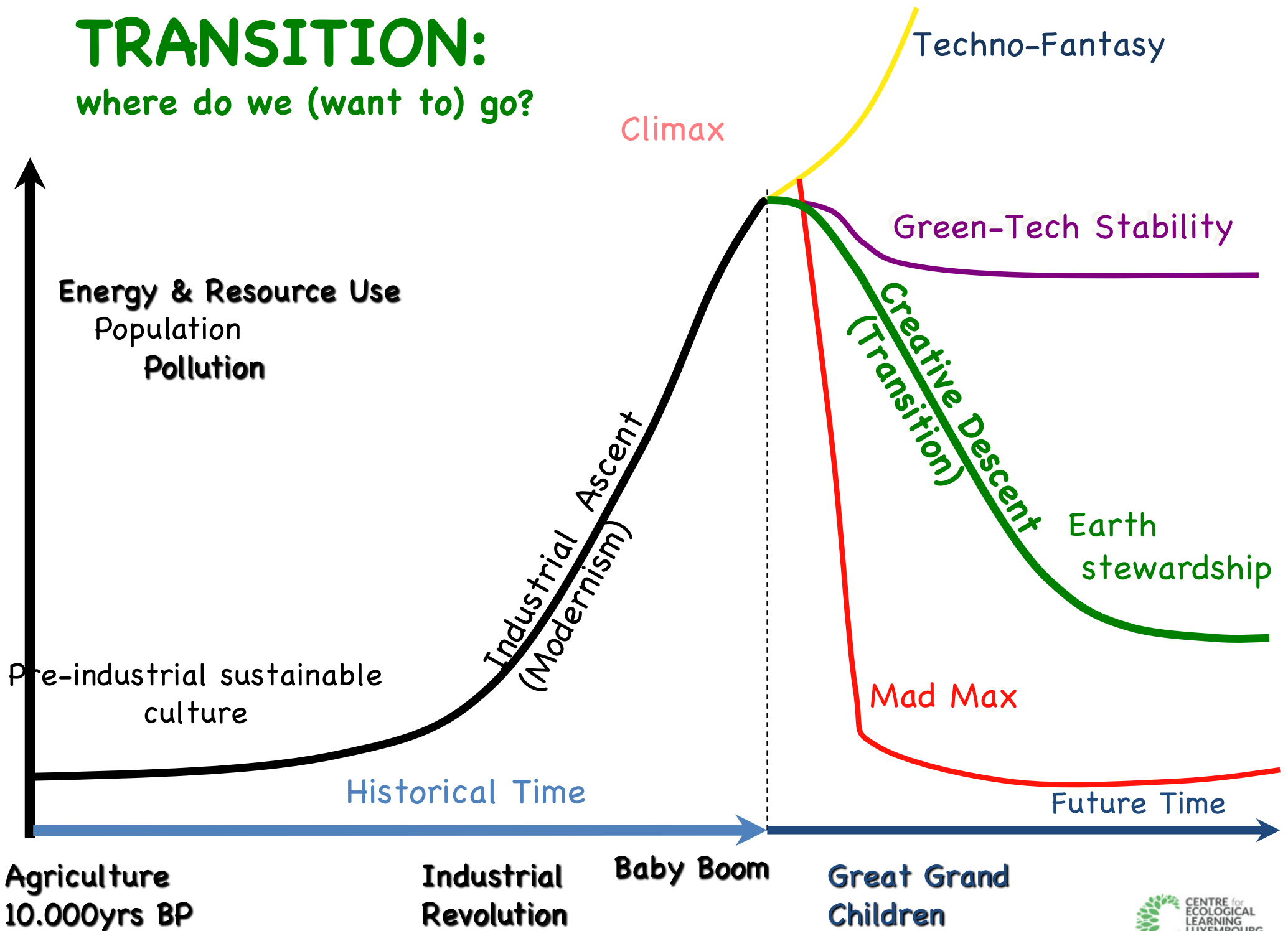
Source: Global Risks 2015 report, World Economic Forum

Learn more at <http://wef.ch/grr2015> Get in touch: GlobalRisksReport@weforum.org or call +41 (0)22 869 1212



TRANSITION:

where do we (want to) go?



Country Overshoot Days 2019

When would Earth Overshoot Day land if the world's population lived like...



Source: Global Footprint Network National Footprint Accounts 2019

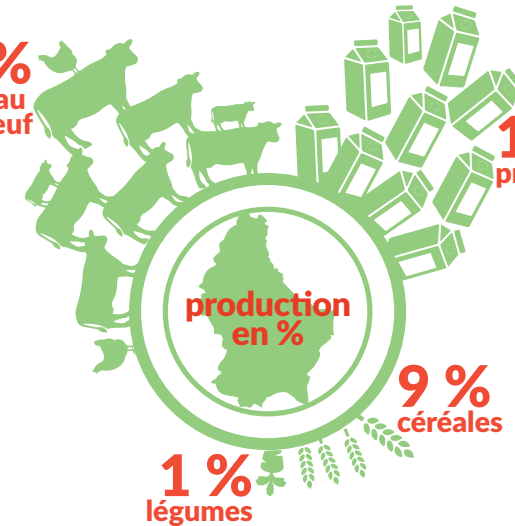


Autosuffisance ? Alimentaire

Le saviez-vous?

117 %
viandes de veau
& de boeuf

112 %
produits laitiers



Le Luxembourg est largement dépendant de l'extérieur pour nourrir les 550 000

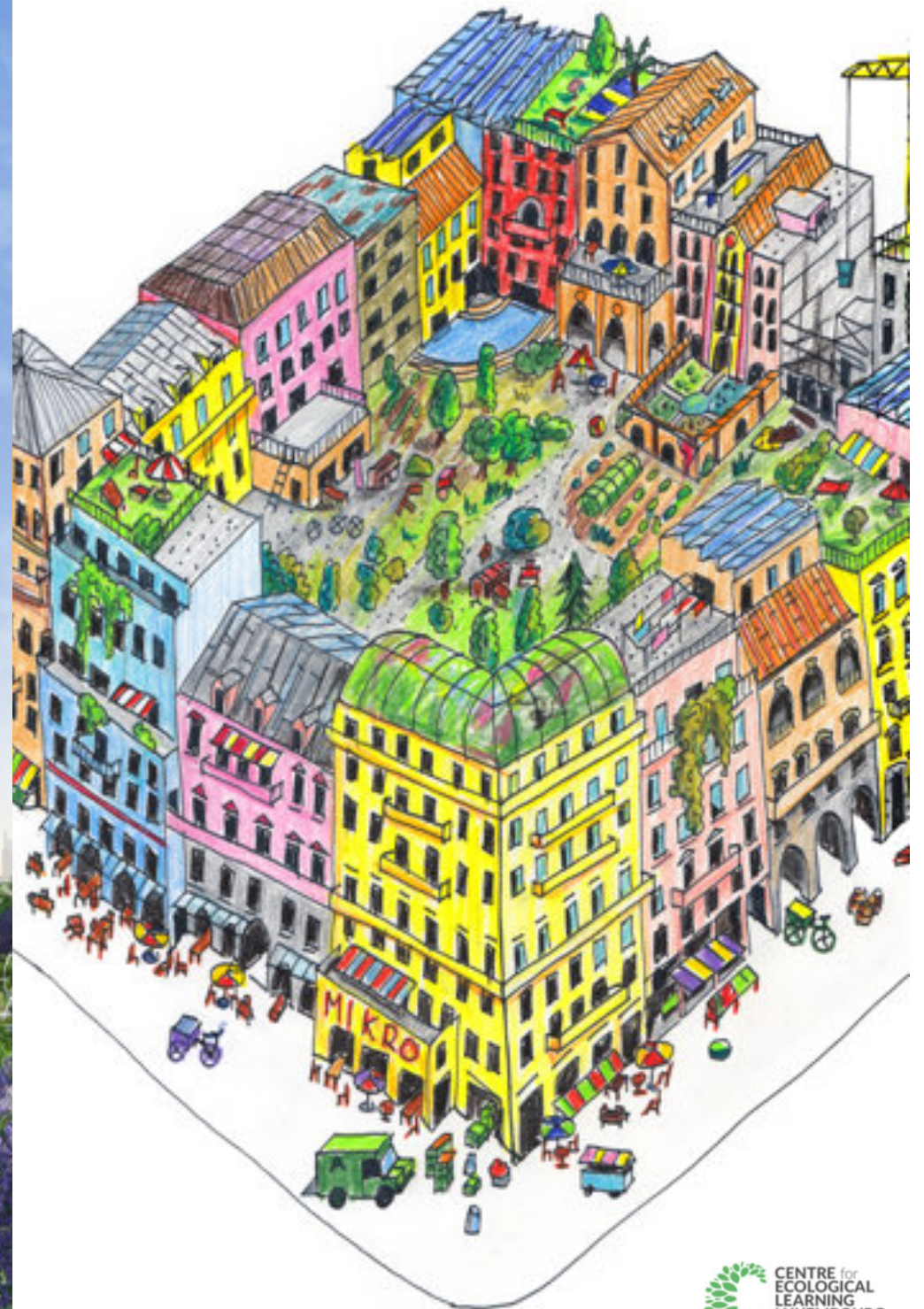
Source: Meng Landwirtschaft



A group of people is participating in a blue string activity. They are holding blue strings that cross each other to form a web. A yellow text box is overlaid on the image.

II. Wie gehen wir vor?





SUESSEM 2030



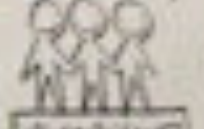
100% VERDUZELIEN

100% VERDUZELIEN GROUPE ZU DREHMILLIARDEN

MÛ DE ROUTE GOOD

RENTES & PRÄNSESCH
VOLLKOMMEN

FUTUR SACHEN
REHABEREN



MÛ GEMEINSCHAFT
NACHER BÄNDEN

GESUND
GEMÜS
AUS EISEN
GART



WANDERN
VON URBISST
A WANDER

BIO SACHEN
MÛ BEWUSST
MIT ELEKTRO-
GERÄTE
EMSOEN

DE GEMEINSCHAFT
VU SUESSEM FIR
ZUKUNFTEN!

INSERVEN
VS
PESSTEBEN

GEMEINSCHAFTS GART

EIGEN ENERGIE
DIREKT NUTZEN
DIEFFEN



BIEGER
ENERGIE
COOPS

0%
ENERGIE

FAHNER
VERKEER

AL 5 MIN
E BUS ODER
ZUG
100%

MOBILITEIT
OUNI
CO2

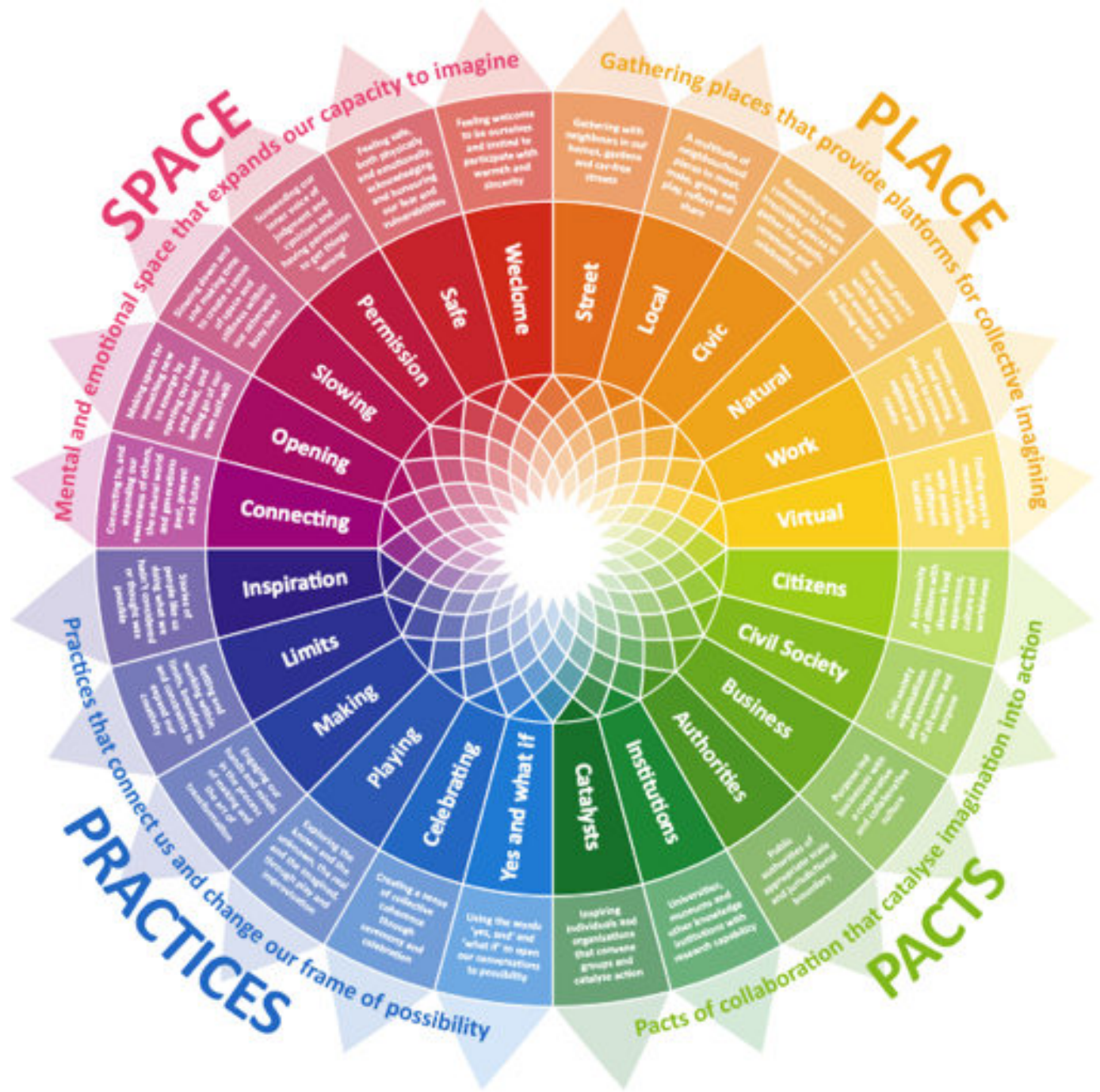
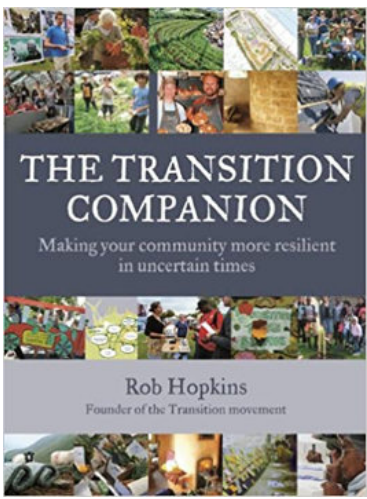
WIRL DENTH
GANGS-VERKEER
AN D'WANDER

WIRL DENTH
GANGS-VERKEER
AN D'WANDER

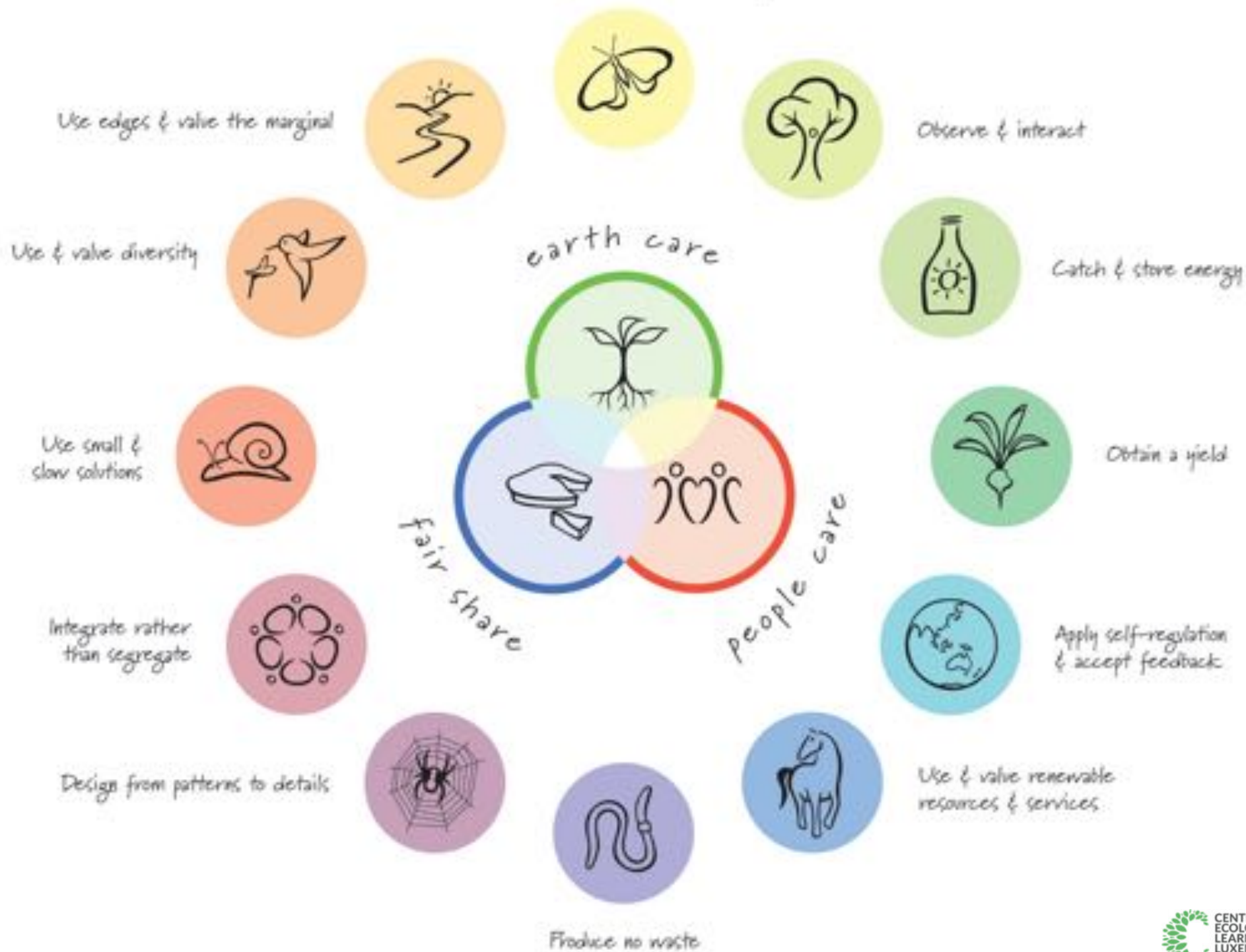
LED'S

UNGENUTZTEN
PFLANZGART ZUR
VERFÜGUNG STELLEN

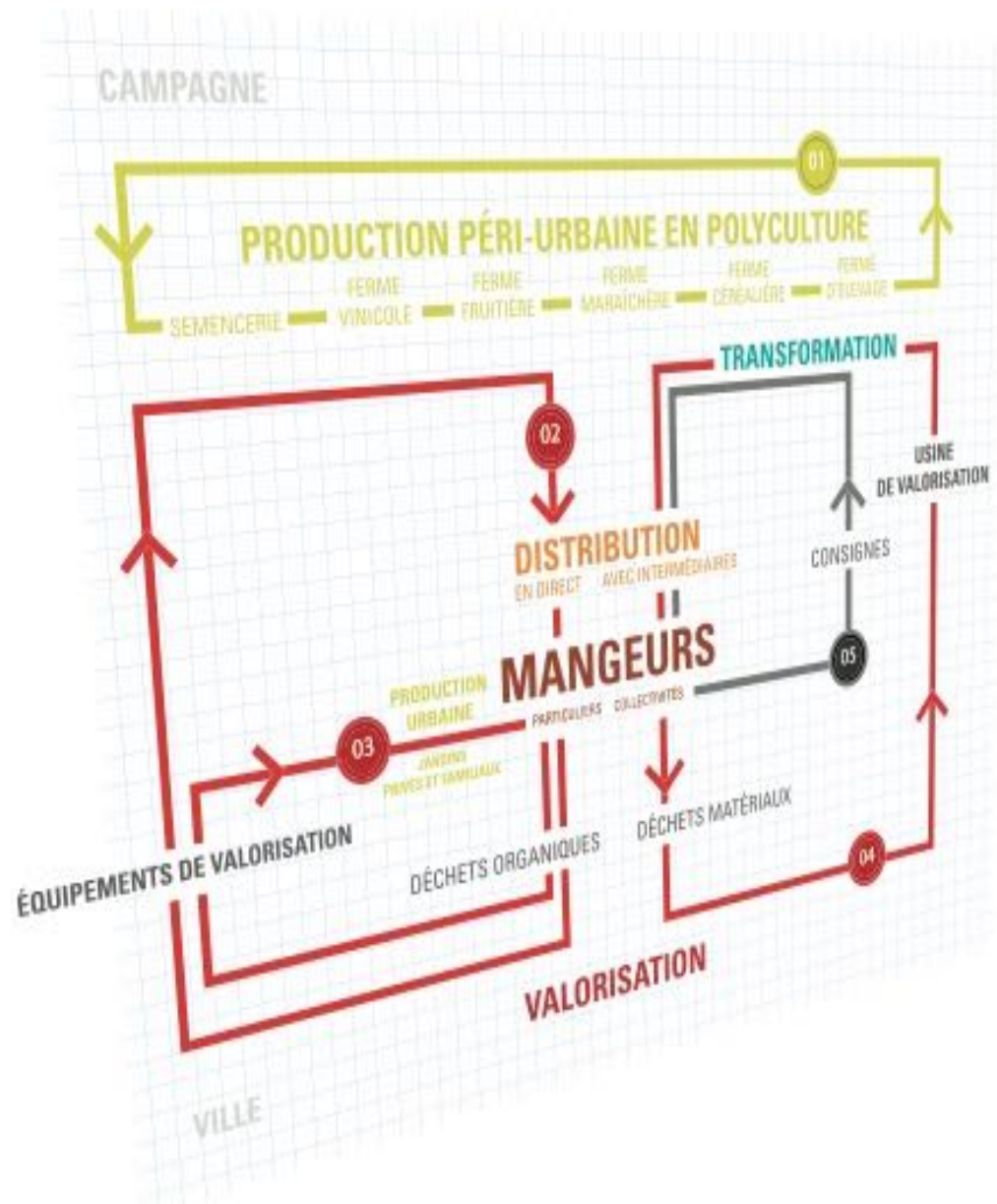
RESPEKT



Creatively use & respond to change














Ernährungsrat

Köln und Umgebung

Gemeinsam
setzen wir uns
für eine bessere
Ernährungspolitik
in der Region
Köln ein...



III. Welche Praxis haben wir entwickelt?

Transition Projekte in Luxembourg





Energiewende in Bürgerhänden



Epicerie coopérative et participative de Luxembourg



Portes ouvertes

24 octobre 2020

Food Coops 10h-16h



Gärten der Gemeinschaft





Interkulturelle Gärten



Saatgut und altes Gemüse



Urbane Gärten





LUXEMBOURG *urban farming*

ACCUEIL

STRATEGIE NATIONALE

ACTEURS

SMART MAPPING

ACTUS

CONTACT

Politik mitgestalten

STRATEGIE NATIONALE URBAN FARMING

LE LUXEMBOURG. UNE SMART NATION

Safari



REconomy

REPENSER

→ *définir, encourager et mettre en œuvre des pratiques durables utilisant peu de pétrole et favorisant la cohésion sociale.*




REconomy: Wirtschaft anders gestalten



Lokale Unternehmer



Regiogeld: Wertschöpfung ganz nah



Do It Yourself

Repair Café: konviviale Technologien





Earthship: Das Raumschiff aus dem Mutterboden





Öffentlichen Raum gestalten



Nachbarschaften erproben

Pacte Climat

Ma commune s'engage pour le climat

Pacte Climat = cooperation betw. local authorities and the Luxbg. Environment Ministry to implement local climate action



**CENTRE for
ECOLOGICAL
LEARNING
LUXEMBOURG**
the official transition hub



CELL (coordinator of the Luxbg. Transition citizen platform) gets mandate from the Ministry to support local authorities to involve citizen, by

- mobilizing citizen
- making capacity building
- helping to kick-start projects





IV. Was haben wir daraus gelernt?



Neustarte gemeinsam gestalten

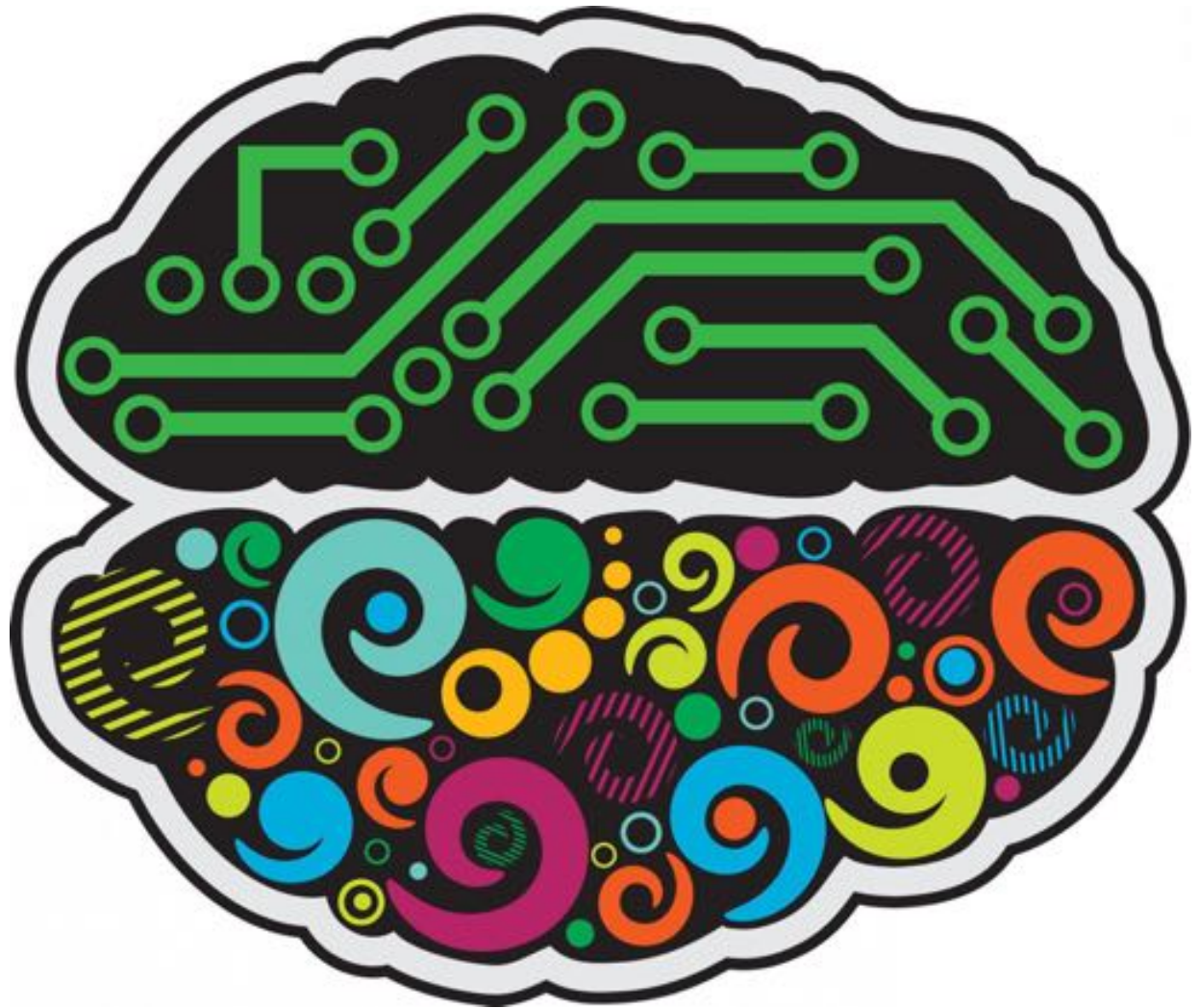
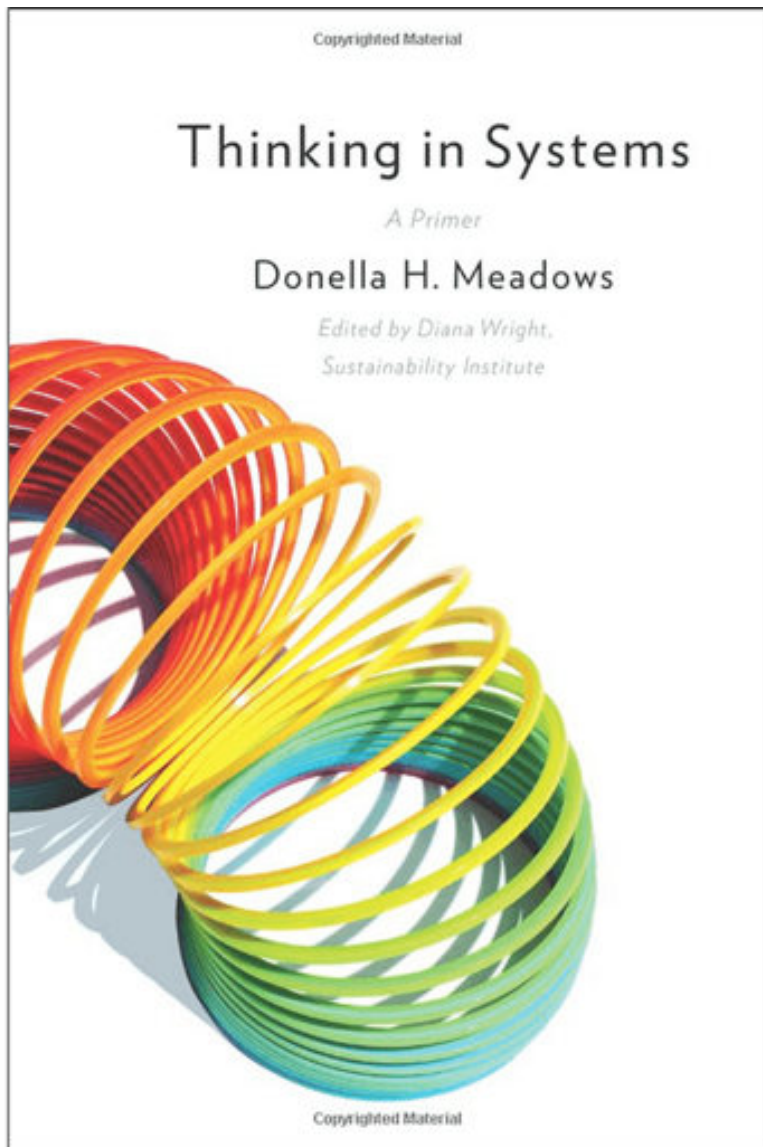


alles mal offen betrachten





Räume für Synergien



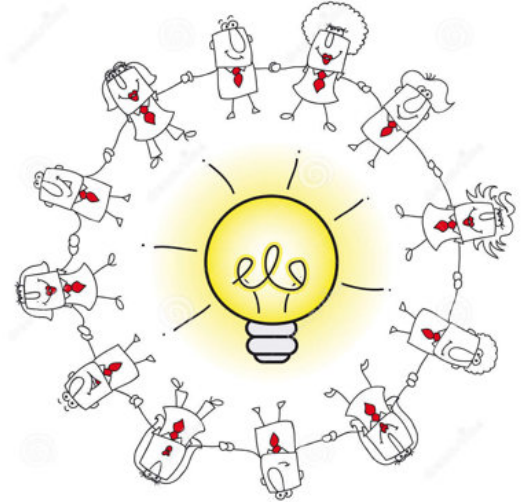
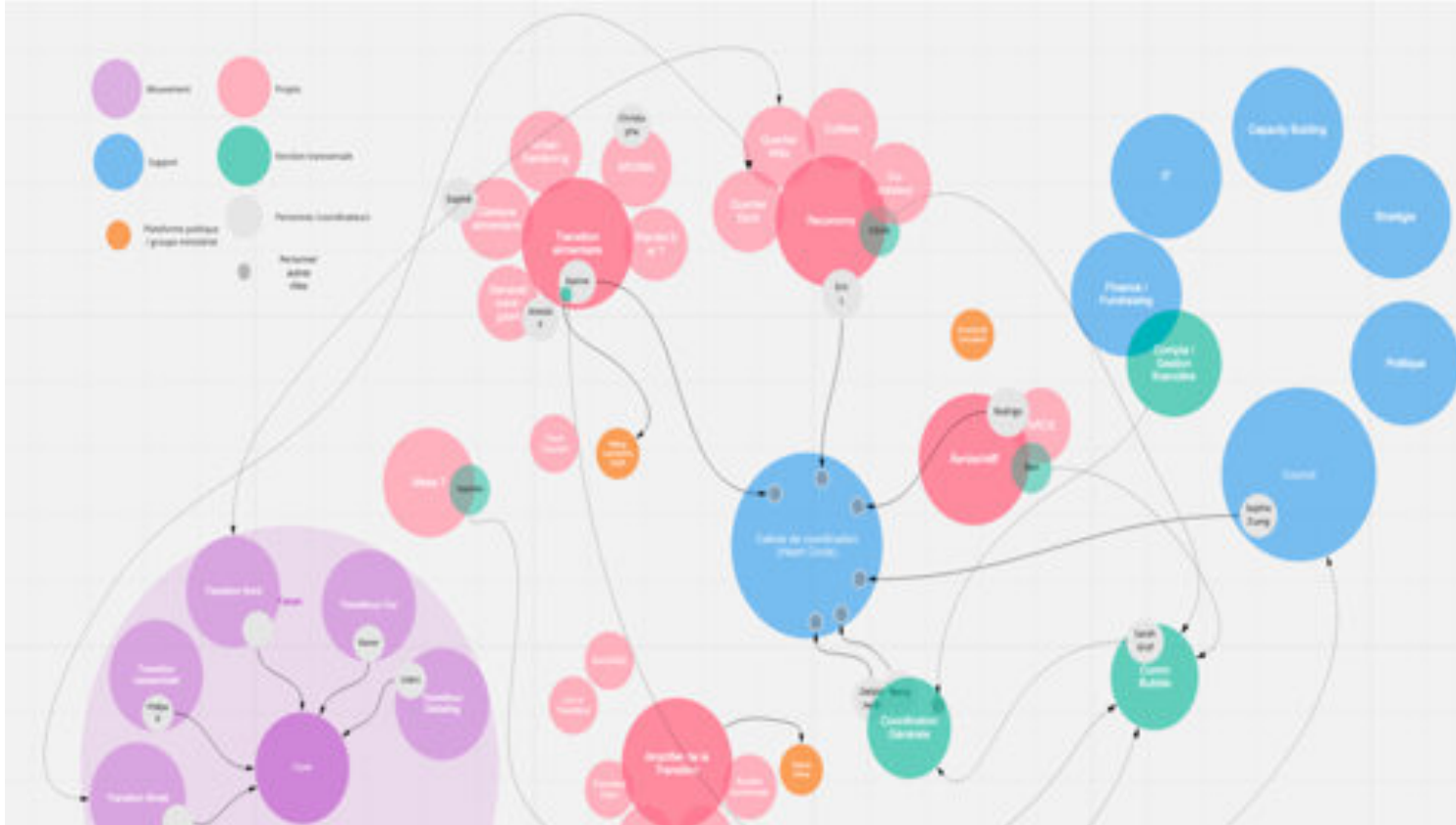
systemisches Denken fördern

Since you only have three minutes to make this critical decision, I'll just share a few sound bites -

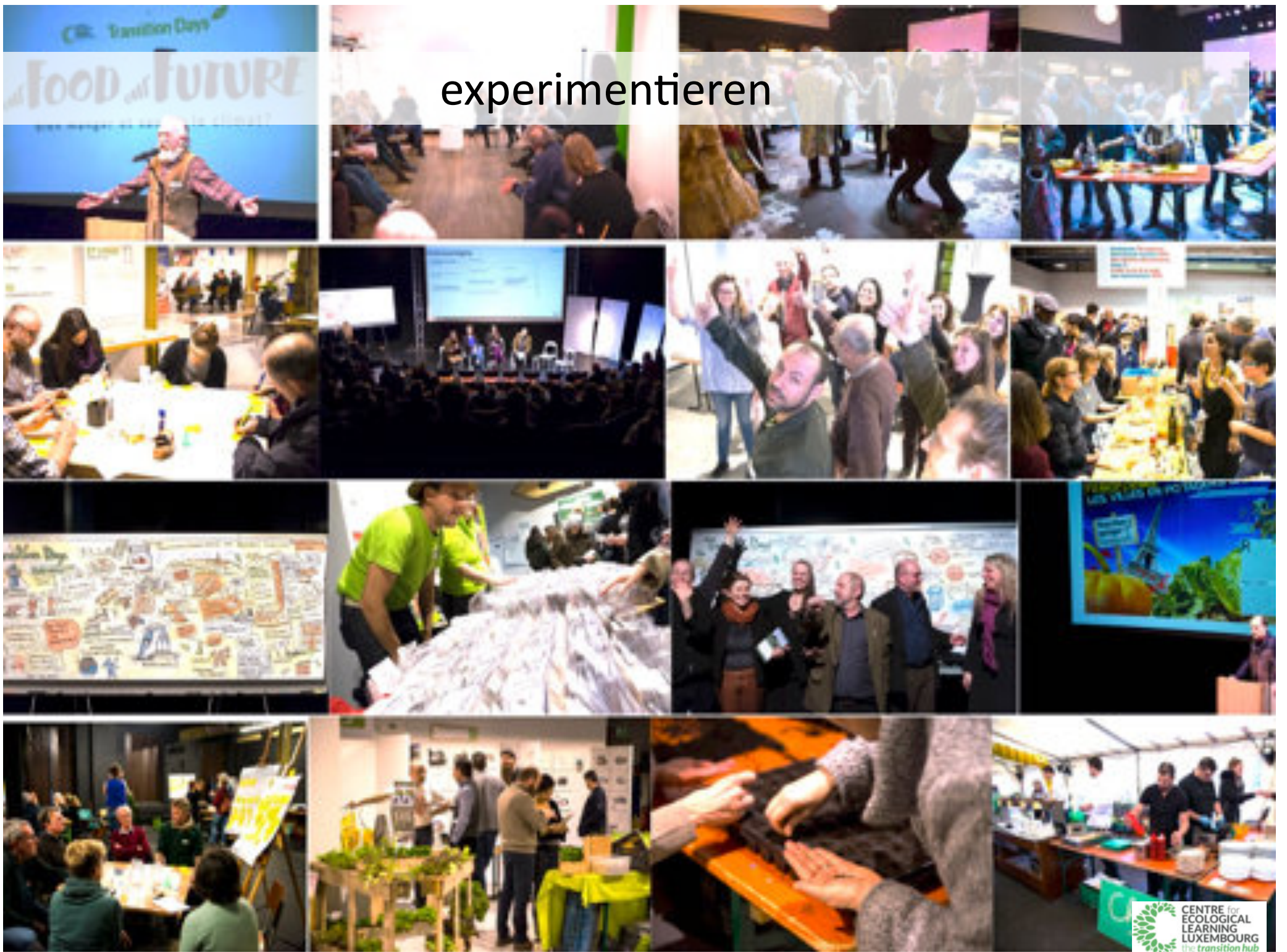
... and then we'll all pretend you understand the implications of your decision.



anders entscheiden

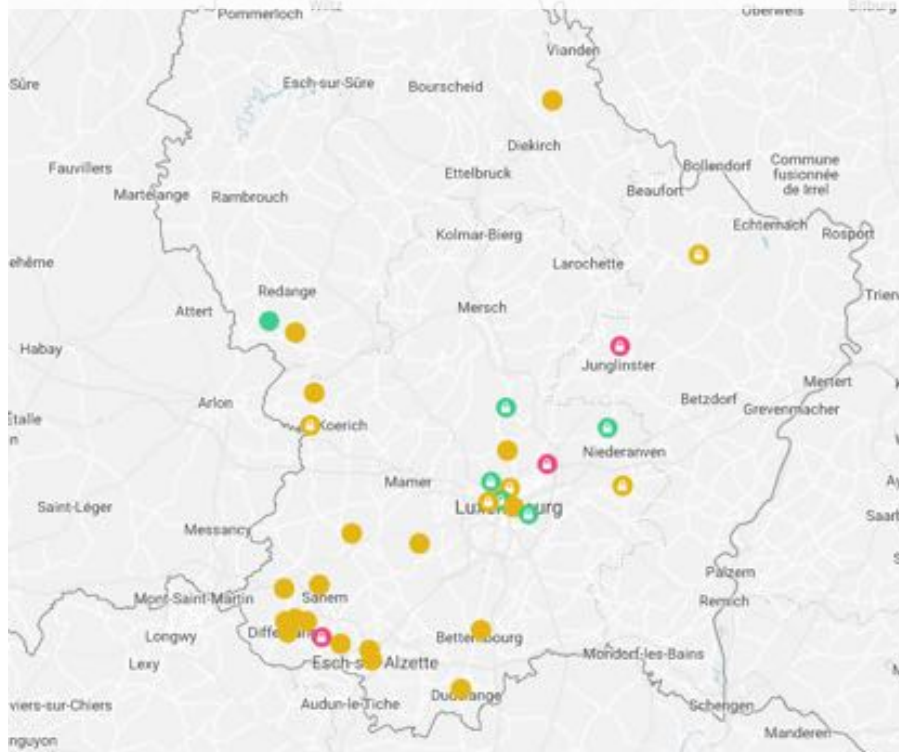


experimentieren





Referenzpunkte schaffen



[Eise Gaart, portail des jardins potagers au Luxembourg](#)

[Carte de l'alimentation responsable, SOS Faim Luxembourg](#)

gute Praxis zeigen

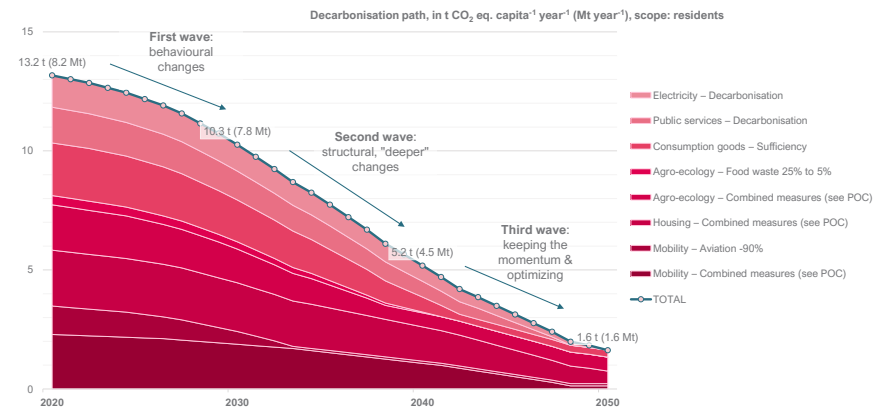
ENG ÄERD

Luxembourg 2050 – Prospects for a Regenerative City-Landscape

Report Phase 1

University of Luxembourg (UL)
Luxembourg Institute of Science and Technology (LIST)
Centre for Ecological Learning Luxembourg (CELL)
Institute for Organic Agriculture Luxembourg (IBLA)
Office for Landscape Morphology (OLM)

nach vorne schauen



kritische Masse bilden



Wissen teilen



Citizens' assemblies



lokale Klimapläne schmieden



den Raum spielerisch erkunden

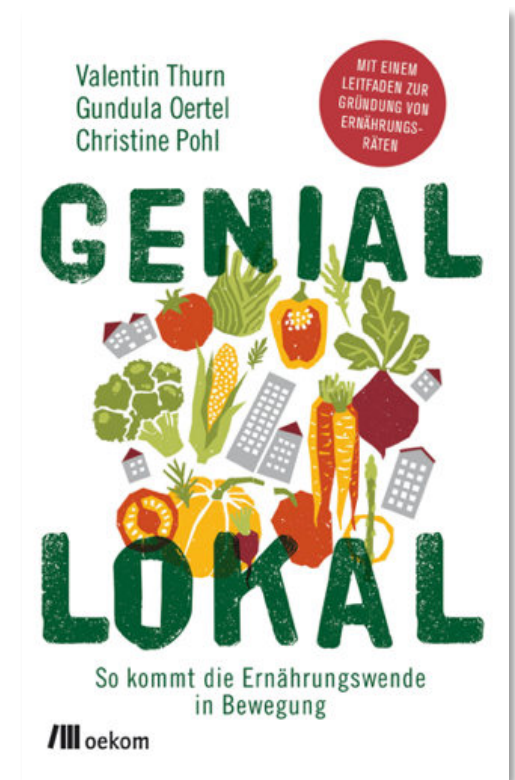


Räume für Begegnung schaffen



Celebrate!

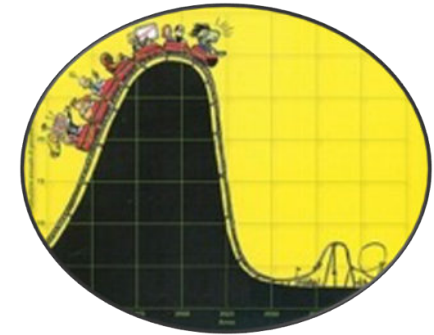






Vielen Dank für Ihre Aufmerksamkeit!

Luxembourg Transition Platform
Centre for Ecological Learning Luxembourg (CELL)



Norry Schneider
norry@cell.lu / +352 621 652 762

Info: www.cell.lu

